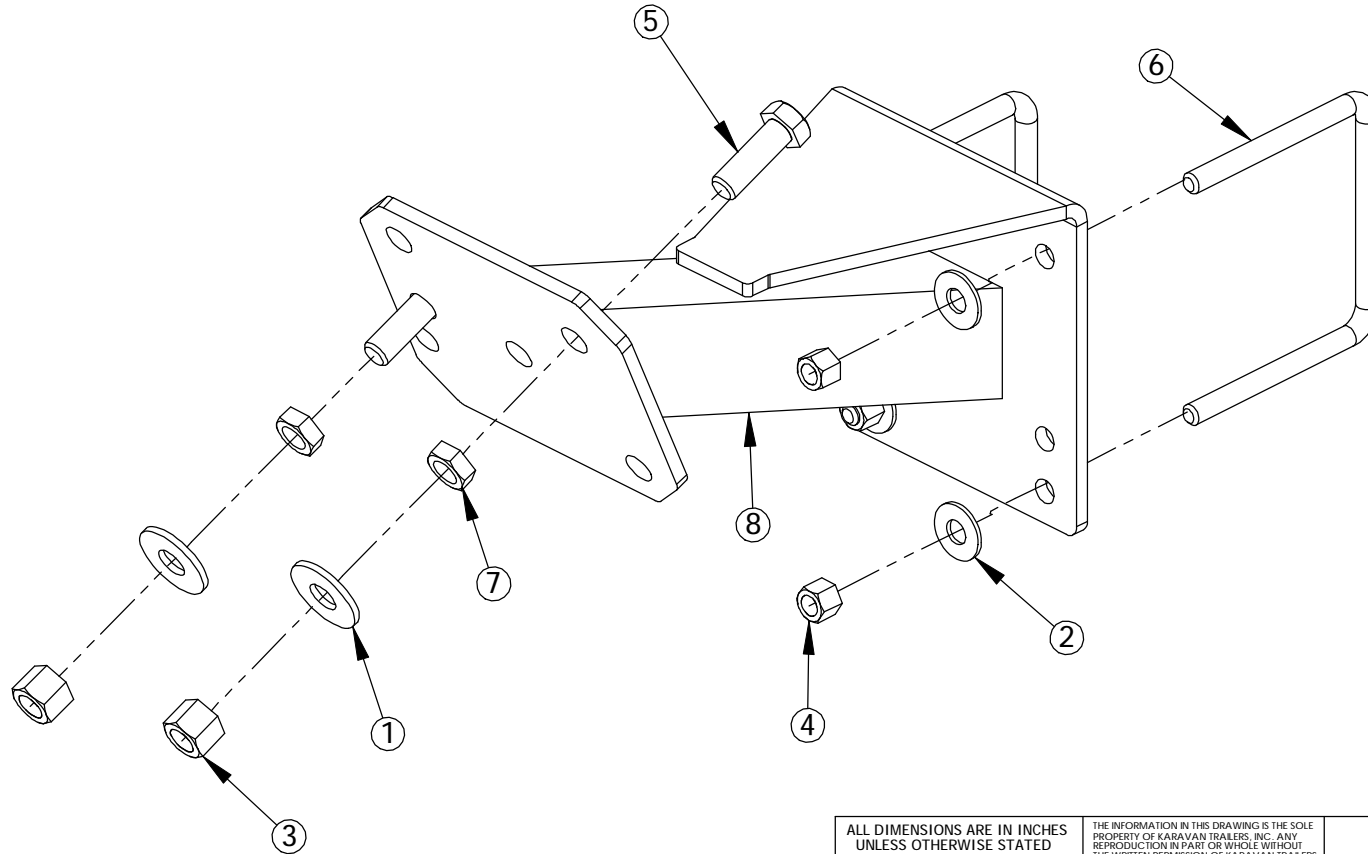


ITEM NO.	PART NUMBER	DESCRIPTION	QTY.
1	210-00017	.50" FLAT WASHER	2
2	210-00025	.375" FLAT WASHER	4
3	210-00047	.50"-13 NYLOCK HEX NUT	2
4	210-00048	.375"-16 NYLOCK HEX NUT	4
5	210-00120	.50"-13 X 1.50" HX HD BOLT	2
6	210-00210	.375"-16 X 4.00" X 4.06" U-BOLT	2
7	210-00323	.50"-13 JAM TOP LOCK NUT	2
8	300-01476	SPARE TIRE CARRIER	1



ALL DIMENSIONS ARE IN INCHES
UNLESS OTHERWISE STATED
TOLERANCES EXCEPT AS NOTED
DECIMALS:

.X	±0.100
.XX	±0.060
.XXX	±0.030
.XXXX	±0.010

ANGLES:
±1°
ALL FORMED ANGLES
EQUAL 90° UNLESS
NOTED OTHERWISE

() INDICATES REFERENCE

THE INFORMATION IN THIS DRAWING IS THE SOLE
PROPERTY OF KARAVAN TRAILERS, INC. ANY
REPRODUCTION IN PART OR WHOLE WITHOUT
THE WRITTEN PERMISSION OF KARAVAN TRAILERS,
INC. IS PROHIBITED.

APPROVED BY:

C-RIECHTER

DRAWN BY:

TINA MCCOY

DATE:

09-27-04

SHEET:

1 OF 1

SCALE:

N/A

KARAVAN
TRAILERS

TITLE:

SIDE MOUNT TIRE CARRIER,
3 X 4 (5-BOLT)

MAT'L:

SEE B.O.M.

FINISH:

N/A

DWG. #:

320-01430-C

DWG. REV.	ECR/NDR NUMBER	REVISED BY	DATE	DESCRIPTION
C	14035	DLC	01-22-09	ADDED 210-00323 (2X)
B	13141	NLA	06-22-06	300-01476 UPDATED