

NOTE:

1. AT BASE OF LEGS,  $3.020^{+.024}_{-.000}$
- 2.) BREAK ALL SHARP CORNERS  $.060$
- 3.) WALL THICKNESS  $.250 \pm .007$  UNLESS OTHERWISE STATED.
- 4.) WEIGHT/FT: 5.46 LBS.
- 5.) PART TO BE DEBURRED.

DWG. REV.	ECR/NDR NUMBER	REVISED BY	DATE	DESCRIPTION
C/4	14171	KDB	06-27-07	CHANGED TOLERANCE ON THE 3.020 DIM TO $.064$ FROM $.040$
C/3	13888	KDB	12-18-06	ADDED DEBURRED NOTE

ALL DIMENSIONS ARE IN INCHES UNLESS OTHERWISE STATED  
TOLERANCES EXCEPT AS NOTED  
DECIMALS:  
 X  $\pm 0.100$   
 .XX  $\pm 0.060$   
 .XXX  $\pm 0.030$   
 .XXXX  $\pm 0.010$   
 ANGLES:  
 $\pm 1^\circ$   
 ALL FORMED ANGLES EQUAL  $90^\circ$  UNLESS NOTED OTHERWISE  
 ( ) INDICATES REFERENCE

THE INFORMATION IN THIS DRAWING IS THE SOLE PROPERTY OF KARAVAN TRAILERS, INC. ANY REPRODUCTION IN PART OR WHOLE WITHOUT THE WRITTEN PERMISSION OF KARAVAN TRAILERS, INC. IS PROHIBITED.  
 APPROVED BY:  
 ---  
 DRAWN BY:  
**Amy L. Groth**  
 DATE:  
 11-14-03  
 SHEET:  
 1 OF 2  
 SCALE:  
 N/A

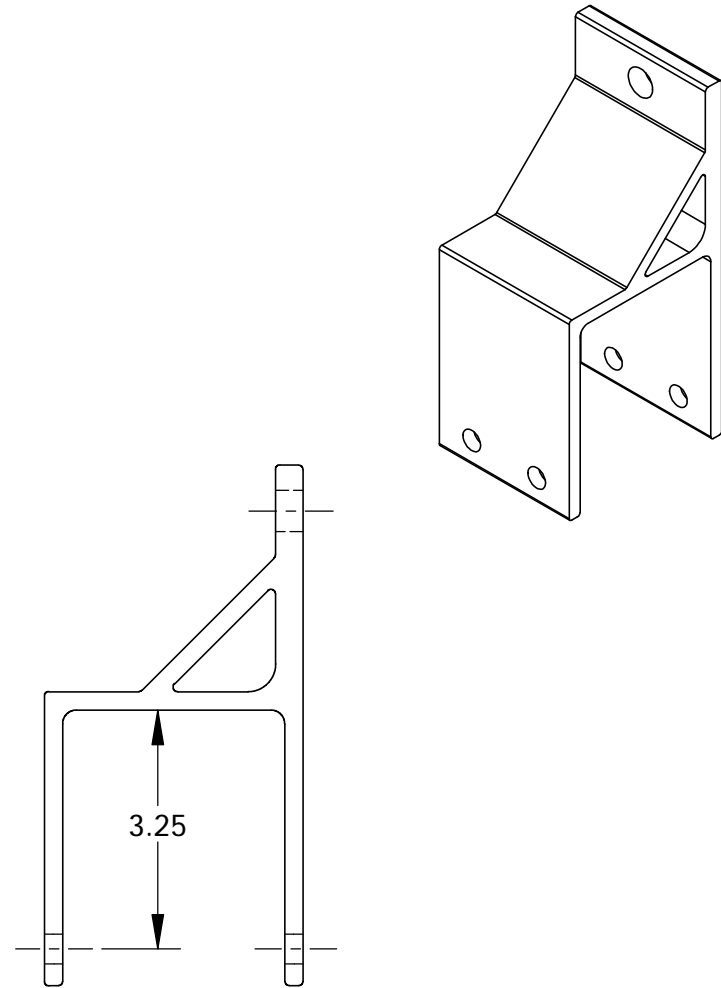
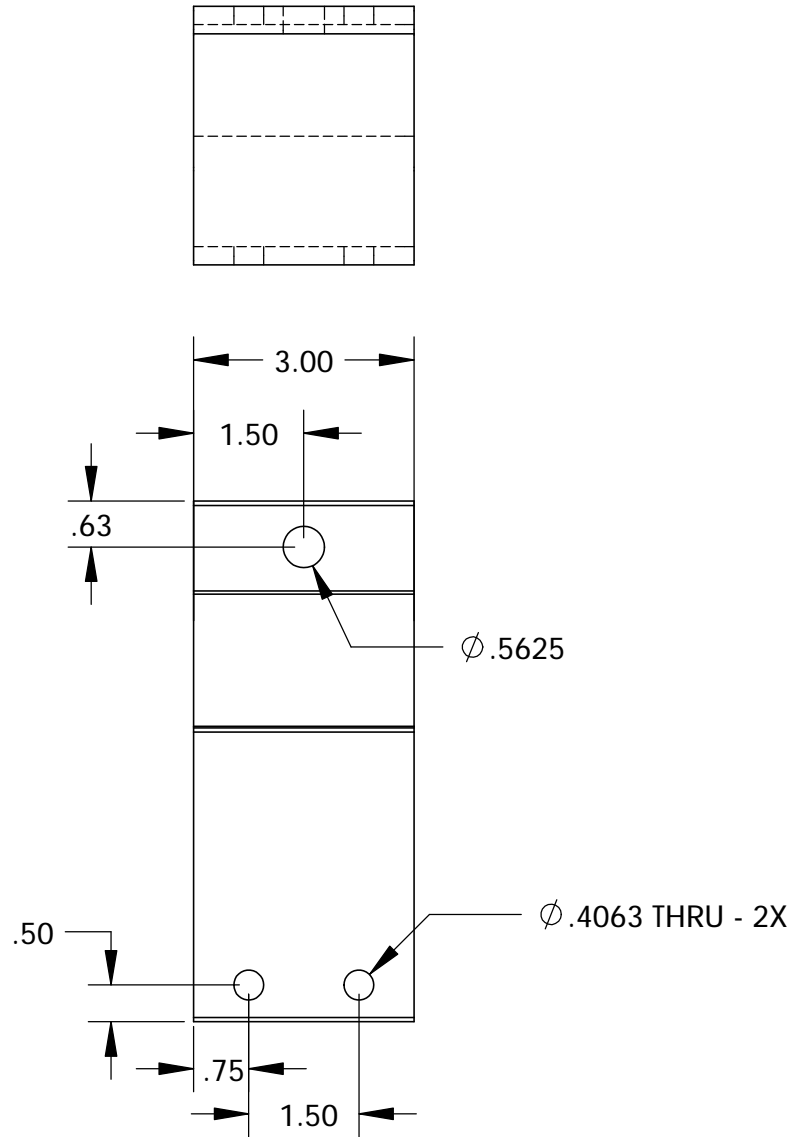
**KARAVAN TRAILERS**

TITLE:  
**BUNK BRACKET  
 (3" X 3" CROSSMEMBER)**

MAT'L:  
 6105-T5 OR 6005-T5  
 ALUMINUM

FINISH:  
 N/A

DWG. #:  
**227-00185**



ALL DIMENSIONS ARE IN INCHES  
UNLESS OTHERWISE STATED  
TOLERANCES EXCEPT AS NOTED

DECIMALS:

.X ±0.100  
.XX ±0.060  
.XXX ±0.030  
.XXXX ±0.010

ANGLES:

±1°

ALL FORMED ANGLES  
EQUAL 90° UNLESS  
NOTED OTHERWISE

( ) INDICATES REFERENCE

THE INFORMATION IN THIS DRAWING IS THE SOLE  
PROPERTY OF KARAVAN TRAILERS, INC. ANY  
REPRODUCTION IN PART OR WHOLE WITHOUT  
THE WRITTEN PERMISSION OF KARAVAN TRAILERS,  
INC. IS PROHIBITED.

APPROVED BY:

---

DRAWN BY:

**Amy L. Groth**

DATE:

11-14-03

SHEET:

2 OF 2

SCALE:

N/A



TITLE:

BUNK BRACKET  
(3" X 3" CROSSMEMBER)

MAT'L:

6105-T5 OR 6005-T5  
ALUMINUM

FINISH:

N/A

DWG. #:

**227-00185**

DWG. REV.	ECR/NDR NUMBER	REVISED BY	DATE	DESCRIPTION
C/4	14171	KDB	06-27-07	CHANGED TOLERANCE ON THE 3.020 DIM TO .064 FROM .040
C/3	13888	KDB	12-18-06	ADDED DEBURRED NOTE