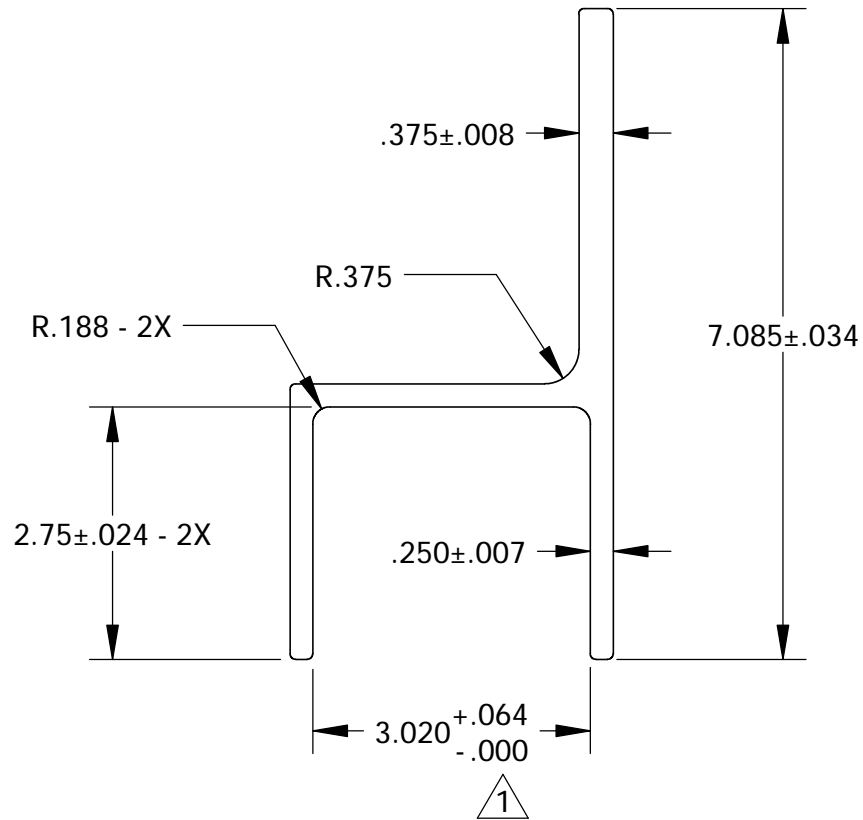
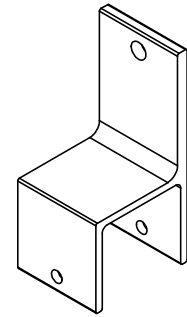
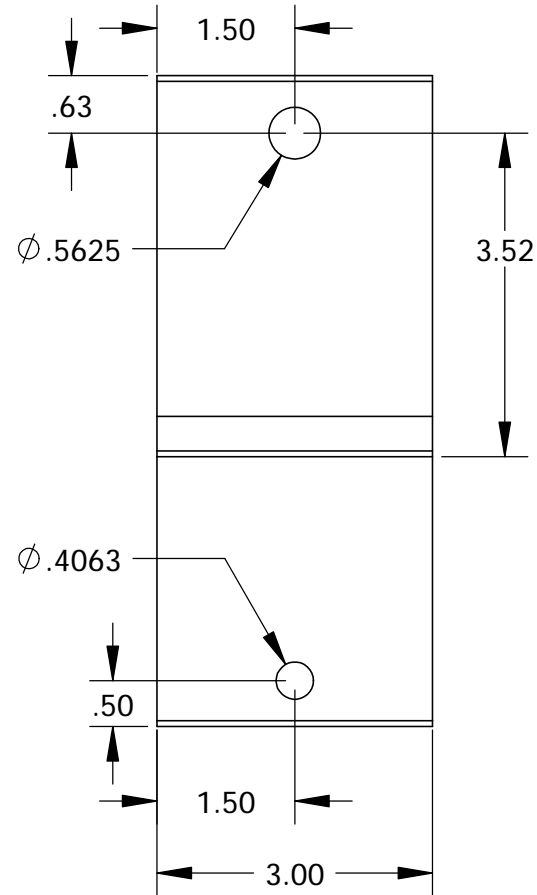


# EXTRUDED VIEW



# FABRICATED VIEW



## NOTES:

- 1) AT BASE OF LEGS,  
3.020 +.024/- .000
- 2.) BREAK ALL SHARP CORNERS .060
- 3.) WALL THICKNESS .250 ± .007 UNLESS OTHERWISE STATED.
- 4.) WEIGHT/FT: 4.59 LBS.
- 5.) PART TO BE DEBURRED.

DWG. REV.	ECR/NDR NUMBER	REVISED BY	DATE	DESCRIPTION
A/6	14171	KDB	06-27-07	CHANGED TOLERANCE ON THE 3.020 DIM TO .064 FROM .040
A/5	13888	KDB	12-18-06	ADDED DEBURRED NOTE.

ALL DIMENSIONS ARE IN INCHES UNLESS OTHERWISE STATED  
TOLERANCES EXCEPT AS NOTED  
DECIMALS:  
X ±0.100  
.XX ±0.060  
.XXX ±0.030  
.XXXX ±0.010  
ANGLES:  
±1°  
ALL FORMED ANGLES EQUAL 90° UNLESS NOTED OTHERWISE  
( ) INDICATES REFERENCE

THE INFORMATION IN THIS DRAWING IS THE SOLE PROPERTY OF KARAVAN TRAILERS, INC. ANY REPRODUCTION IN PART OR WHOLE WITHOUT THE WRITTEN PERMISSION OF KARAVAN TRAILERS, INC. IS PROHIBITED.  
APPROVED BY:  
DRAWN BY:  
DOUG DRAY  
DATE:  
05-01-03  
SHEET:  
1 OF 1  
SCALE:  
N/A

**KARAVAN TRAILERS**  
TITLE:  
ALUMINUM EXTRUSION  
MAT'L:  
6105-T5 OR 6005-T5 ALUMINUM  
FINISH:  
N/A  
DWG. #:  
227-00184